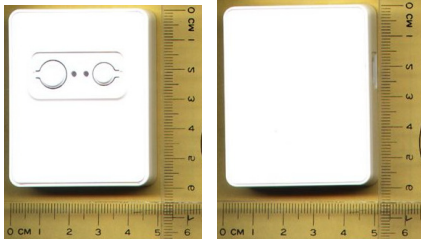
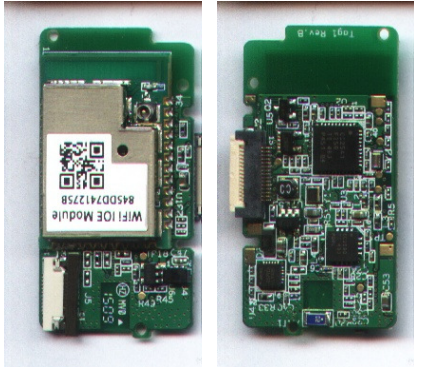




pLink GW100 – IoT Gateway



外殼 58mm x 50mm x 12mm



主板 42mm x 22mm x 3.8mm

Overview

pLink GW100 is a WiFi Bluetooth LE Gateway with 9 axis MEMS sensor. It can provide high data rate data communication either by WiFi and Bluetooth LE. Bridging between WiFi and Bluetooth LE. It also provides complete Beacon support of fast broadcasting, listening and monitoring RF signals around. pLink GW100 are designed to build sophisticated network connectivity to your product quickly and simply. By seamlessly integrating Qualcomm's ultra low power WiFi and TI's Bluetooth LE together in a small form factor, GW100 is suitable to wearable and long battery life applications. pLink GW100 helps eliminating the development effort and helps to offer network connectivity within weeks. People can quickly put his focus on his most valuable tasks like service

providing, building applications and Cloud.

Target Applications

- * Sensor Hub
- * Indoor Localization
- * Assets Management
- * Household appliances
- * Building Automation Controllers
- * Connected Digital Signage Controller
- * Directly Digital Controllers
- * Gesture Logging and Analysis

Features and Specifications

WiFi – Qualcomm QCA4004

- Standard: IEEE 802.11b/g/n
- Frequency: 2.412 to 2.484GHz
- Channels: up to 1 channels
- Mode: BSS STA
- Security modes: WEP, WPS, WPA, WPA2, TKIP, WAPI
- Stack: TCP/UDP, IPv4/IPv6, ARP/NDP, DHCPv4, ICMPv6
- Standby mode: 130uA
- Power Consumption
 - ◆ Tx: 250mA @ 16dBm
 - ◆ Rx: 75mA (typical)

Bluetooth LE – TI CC2541 + CC2590

- 2.4GHz Bluetooth low energy Compliant
- Supports 250Kbps/500Kbps/1Mbps/2Mbps Data Rate
- TX power : up to 13dBm (plus CC2590)
- RX sensitivity: -97dBm at 1Mbps (plus CC2590)
- Programmable Output Power
- Multiple roles support: Central, Peripherals, Offserver, Broadcast and combined.

- UUID, Major, Minor value rotation
- ### Motion Sensor

- InvenSense MPU9250 (Optional)

System Information

- Build-in 900mA/3.7V Li-Poly Battery
- LED indicators x 2
- Buttons x 2
- SDK: Comprehensive APIs for development
- Firmware: upgradeable via TFTP or USB

Power

- Micro USB jack x 1 (Power Input)
- +5Vdc/500mA input

About Portalinks

Portalinks Technology Corp. located in New Taipei City, Taiwan, designs and develops embedded system solutions, for wide-ranged kinds of applications e.g. PDA, Tablet, In-home Display, Multimedia devices, eReader, Medical devices, automation controllers and other common bus infrastructures. From the beginning in 2003, customized solutions offering longevity are a strong part of Portalinks business as well. Successfully deployed products span from embedded modules up to fully integrated systems and products.

pLink board series is a new member to expand our product portfolio. This flexible and modular can be used for both, evaluation purposes of processor technology and directly integrating in customers' system of production.

Portalinks should have the right to change or modify this specification at any time without prior notice.