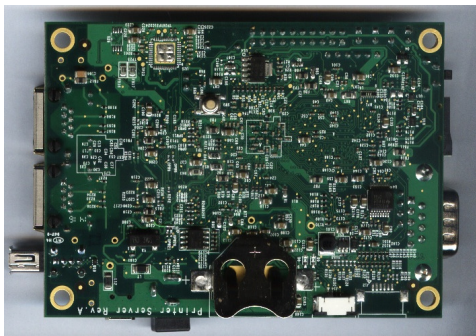
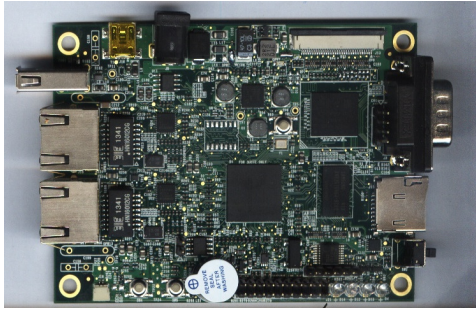




pLink board – MS100 mini server



Overview

pLink-boards MS-100 mini server is a low cost, high performance and robust single board computer board for various applications which requires a high level OS, dual LAN ports and a TFT LCD display capabilities. MS-100 is designed to build sophisticated network connectivity to your product quickly and simply. pLink-board is a compact, integrated solution to web-enable devices with serial capability. pLink-board eliminates the development effort and helps to offer network connectivity within weeks. Your products can be accessed and controller over Ethernet or Wifi.

Target Applications

- ◆ Industrial Automation
- ◆ Smart Grid
- ◆ Home Appliance
- ◆ Connected Digital Signage Controller
- ◆ Directly Digital Controllers

- ◆ Serial Bus Data Converter
- ◆ Vehicle electronic applications
- ◆ Man-Machine Interface controller

Features and Specifications

System Information

- ◆ CPU: TI Sitara AM3352 (Cortex A8 up to 1GHz)
- ◆ RAM: Onboard DDR3 256MB/512MB
- ◆ Flash: Onboard eMMC 4GB
- ◆ Onboard precise RTC with backup battery
- ◆ OS: Linux 3.2 (Android/WinCE by request)

Peripherals

- ◆ 10/100Mbps Ethernet on RJ45 x 2
- ◆ USB 2.0 Host type A x 1
- ◆ USB 2.0 OTG type mini A x 1
- ◆ 24bpp TTL LCD on 40pin connector x 1
- ◆ 4-wire resistive touch interface x 1
- ◆ Buzzer x 1
- ◆ Onboard Audio Codec(AIC3106, opt.) x 1
- ◆ Micro SD card slot x 1
- ◆ RS-232 (DB9) x 1
- ◆ CAN bus x 1
- ◆ UART (debug console) x 1
- ◆ CR2032 RTC holder x 1
- ◆ LED x 2
- ◆ Buttons x 2
- ◆ DC-Jack x 1
- ◆ JTAG (20pins) x 1
- ◆ WiFi ready
- ◆ ZWAVE ZM5202 (optional, UART)

Environmental

- ◆ Standard Temp.: 0 to 70 °C (32 to 158 °F)
- ◆ Extended Temp.: -40 to 85 °C (-40 to 185 °F)
- ◆ Operating Humidity: 5 to 95% RH
- ◆ Storage Temp.: -40 to 85 °C (-40 to 185 °F)

Power

- ◆ Input Voltage: 5V /1.5A through DC-Jack

or mini USB type A

Package

- ◆ Dimensions: (102) x (75) x (40) mm

About Portalinks

Portalinks Technology Corp. located in New Taipei City, Taiwan, designs and develops embedded system solutions, for wide-ranged kinds of applications e.g. PDA, Tablet, In-home Display, Multimedia devices, eReader, Medical devices, automation controllers and other common bus infrastructures. From the beginning in 2003, customized solutions offering longevity are a strong part of Portalinks business as well. Successfully deployed products span from embedded modules up to fully integrated systems and products.

pLink board series is a new member to expand our product portfolio. This flexible and modular can be used for both, evaluation purposes of processor technology and directly integrating in customers' system of production.

The pLink™ MS100 board utilizes TI Sitara AM3352 processor which is based on the famous ARM Cortex A8 architecture. With their low power consumption and compact dimensions, pLink boards are powerful integrated field controllers suitable for applications in Automotive, Industrial Automation, Medical, Railways & Transportation, Construction and or Defense market segments. Through various onboard I/Os and expansion IO modules, they provide versatile options to satisfy a wide range of application requirements.